

3 Disassembly and Reassembly

This section of the service manual describes the disassembly and reassembly procedures for the GS17VS/GS17VT/GS19VS/GS19VT/GS15MS/GS17MS/GS19MS TFT-LCD monitors.

WARNING: This monitor contains electrostatically sensitive devices. Use caution when handling these components.

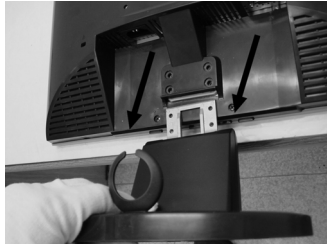
3-1 Disassembly

Cautions: 1. Disconnect the monitor from the power source before disassembly.

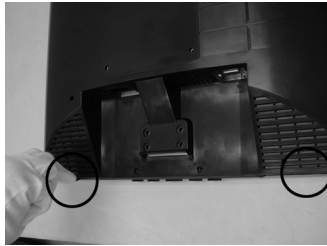
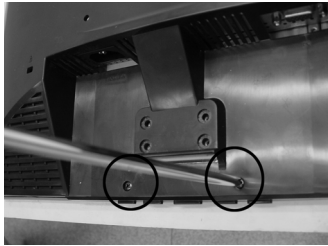
2. Follow these directions carefully; never use any metal instrument except provided jig to separate the cabinet.

3. R/Cover opening jig : BH81-00001A

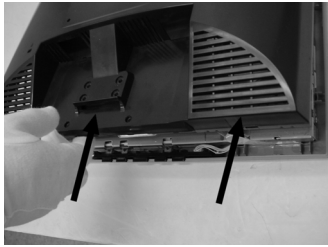
3-1 GS17VS/GS17VT/GS19VS/GS19VT



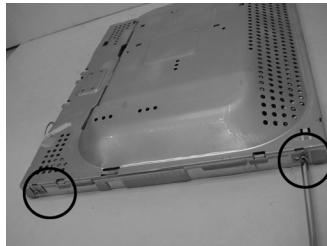
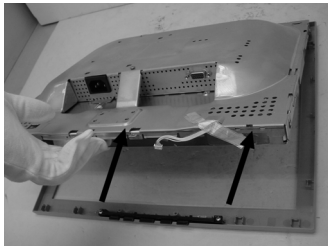
1. Place monitor face down on cushioned table. Remove 4 screws from grip on the stand and remove the stand.



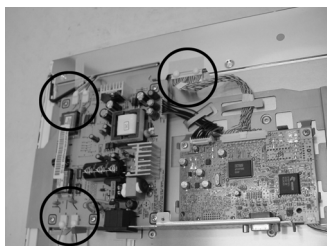
2. Remove 2 screws from the rear cover and insert the opening jig into the grooves at each side and press until it clicks.



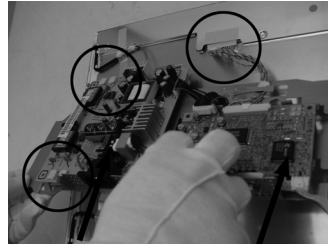
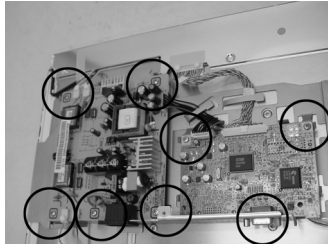
3. Lift the rear cover and remove 1 screws from the shield.



4. Lift up the panel shield and remove 4 screws from the panel shield. (Right / Left)



5. Lift up the panel shield and carefully remove the silicon glue on the cables with a Nipper.
⚠ Caution : Lamp wire may be easily damaged. Please use caution when removing the silicon.

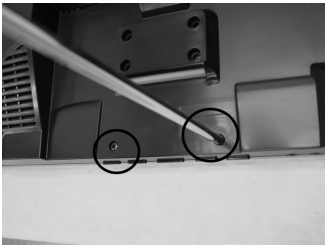
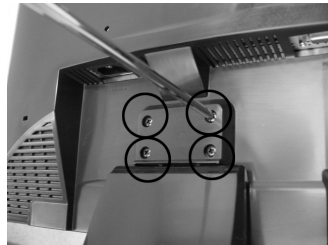


6. Remove 7 screws, 2 hexa screws from the boards and lift up the boards.
⚠ Caution : When repairing panel only, disconnect just LVDS cable, Panel-Lamp / Wire marked in circle in the picture without removing the screws on board in order to lift the board up.

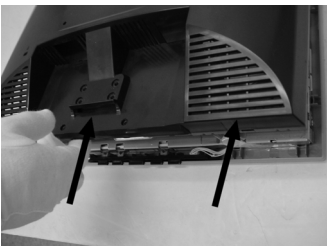


7. This picture is panel.

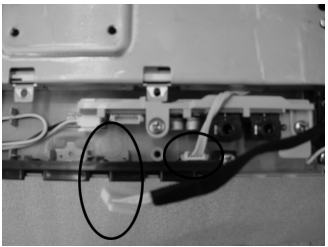
3-2 GS15MS/GS17MS/GS19MS



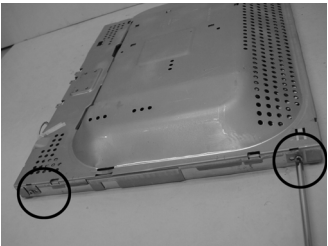
1. Place monitor face down on cushioned table. Remove 4 screws from grip on the stand and remove the stand. Remove 2 screws from the rear cover.



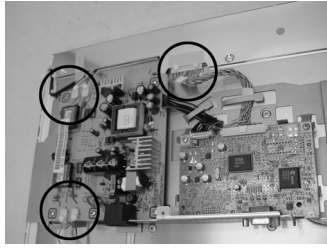
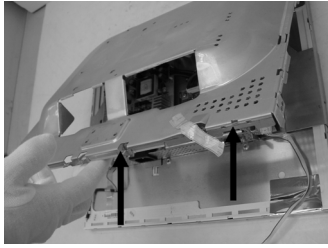
2. Insert the opening jig into the grooves at a hole and press until it clicks and lift up the rear cover.



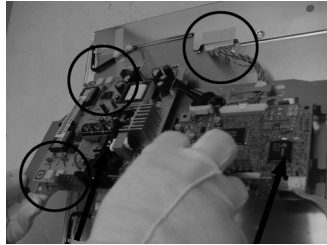
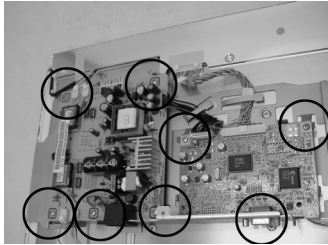
3. Remove 3 screws from the shield and disconnect function cable, speaker cable from the shield.



4. Lift up the panel shield and remove 4 screws from the panel shield. (Right / Left)



5. Lift up the panel shield and carefully remove the silicon glue on the cables with a Nipper.
⚠ Caution : Lamp wire may be easily damaged. Please use caution when removing the silicon.



6. Remove 7 screws, 2 hexa screws from the boards and lift up the boards.
⚠ Caution : When repairing panel only, disconnect just LVDS cable, Panel-Lamp / Wire marked in circle in the picture without removing the screws on board in order to lift the board up.



7. This picture is panel.

3-3 Reassembly

Reassembly procedures are in the reverse order of disassembly procedures.

Memo